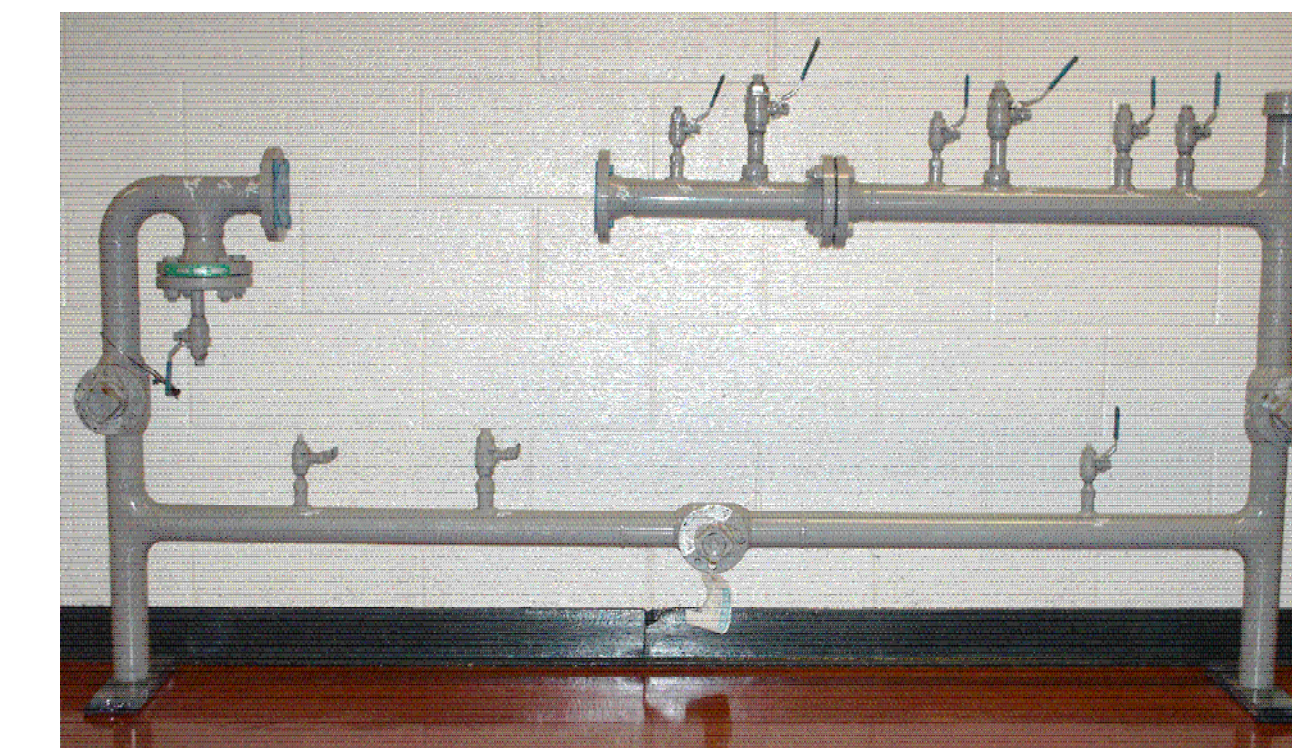
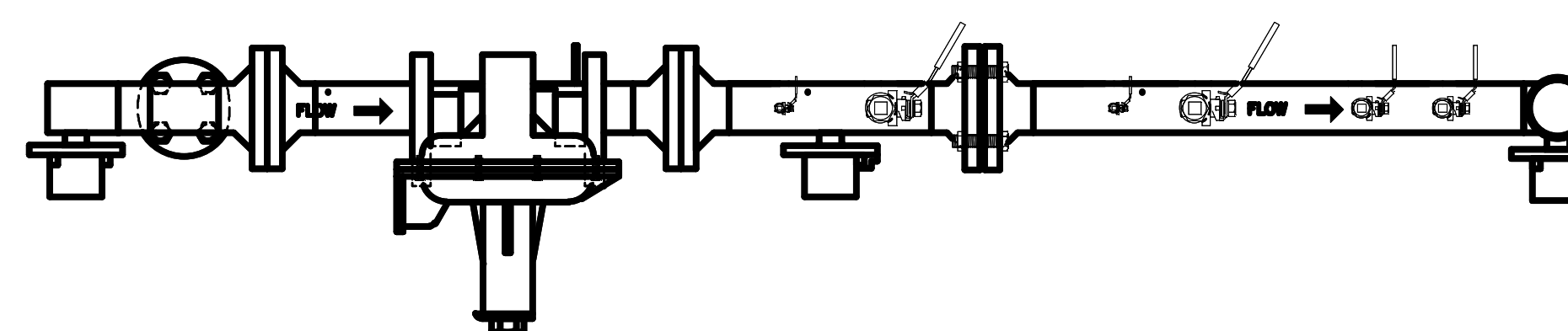


DETAIL LISTING OF FITTINGS AND VALVES

| ITEM | QUANTITY | DESCRIPTION |
|------|----------|---|
| ① | 3 | 2" BALLMAX, WELD END VALVE, RP, ANSI 150 |
| ② | 4 | 2" FLANGE, WN, RF, ANSI 150 |
| ③ | 3 | 2" WELD TEE |
| ④ | 1 | 2" WELD ELL |
| ⑤ | 1 | 2" STRAINER, "T" TYPE, ANSI 150, 100 MESH |
| ⑥ | 1 | 2" NIPPLE, 4" LONG, TOE |
| ⑦ | 1 | 2" CAP, THREADED |
| ⑧ | 4 | 1/2" x 1/4" SWAGE XH TSE, 1/4" VALVE RUB BALL 100 LBS. SS, 1/4" PLUG XH |
| ⑨ | 2 | 3/4" THREADED-O-LET, 3/4"x3" NIPPLE XH TBE |
| ⑩ | | 3/4" VALVE RUB BALL 1000 LB. SS, 3/4" PLUG XH |
| ⑩ | 3 | 3/4" x 1/2" SWAGE XH TSE, 1/2" VALVE RUB BALL 1000 LB. SS, 1/2" PLUG XH |
| ⑪ | 1 | 1/2" x 3" NIPPLE HX TBE, 1/2" VALVE RUB BALL 1000 LB. SS, 1/2" PLUG XH |



ELEVATION PICTURES
OF ACTUAL PIPES AND VALVES



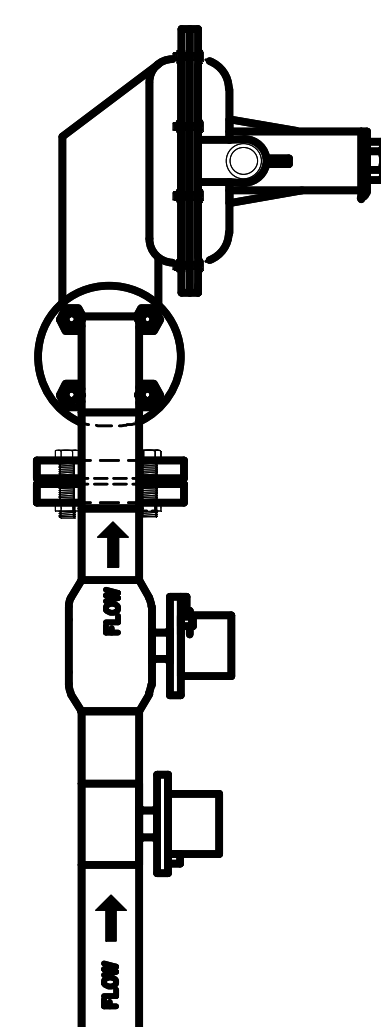
PLAN VIEW OF PUMPS

SCALE: 1-1/2" = 1'

NOTE:

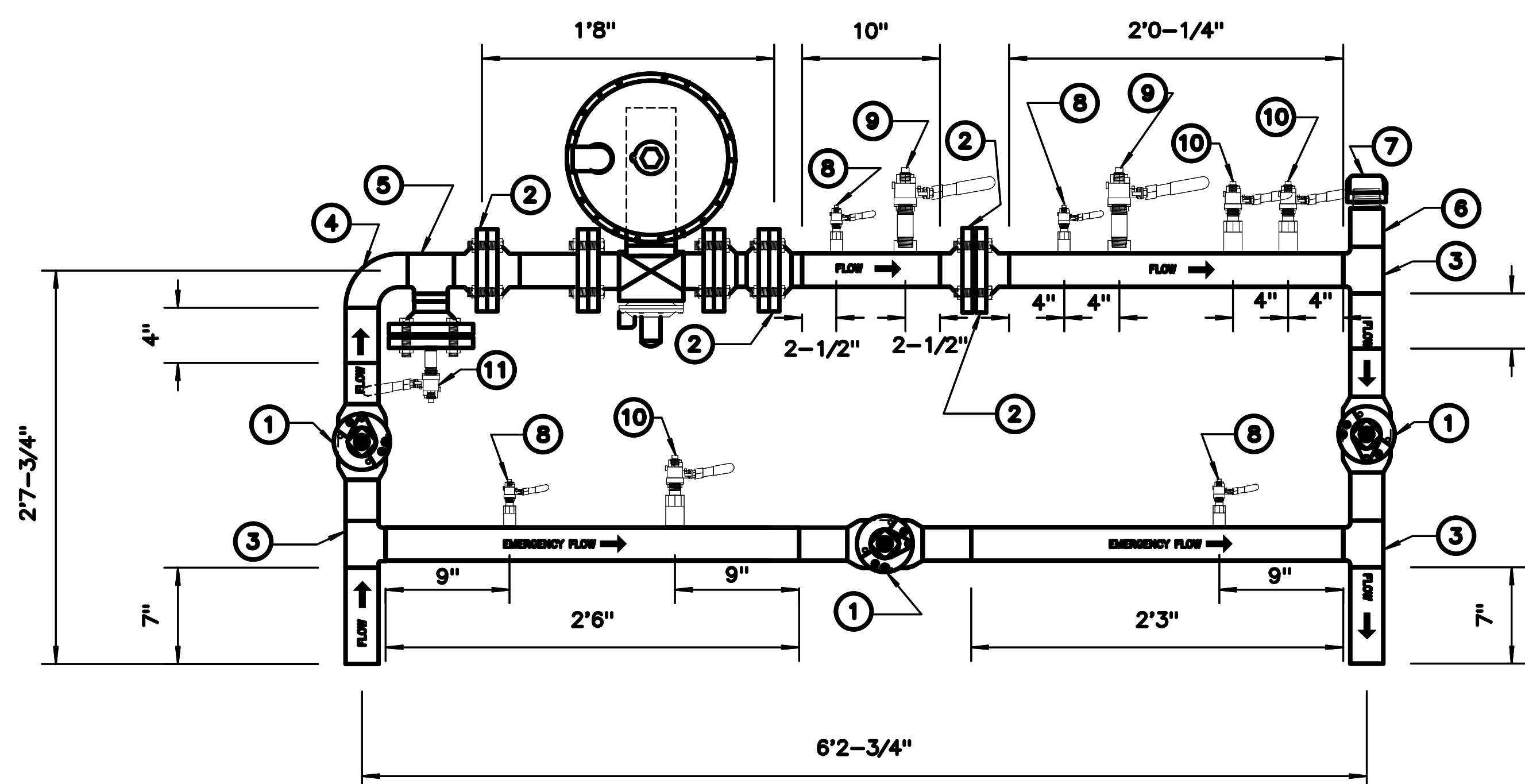
- 1.) SAND BLAST, TNEMEC
- 2.) TEST 428 PSIG FOR 60 MIN.
- 3.) EXPOSED THREADS AND OPENING COVERED WITH PROTECTIVE CAPS
- 4.) PROPER PACKAGING AND CRATING TO AVOID DAMAGE TO PAINTED SURFACES

DO NOT PAINT STAINLESS STEEL VALVES



END VIEW

SCALE: 1-1/2" = 1'



SCALE: 1-1/2" = 1'

| | | |
|--|---|--|
| <p>GENERAL TOLERANCE</p> <p>FRACTIONS ± 1/64</p> <p>DECIMALS ± .003</p> <p>ANGLES ± 0° - 15'</p> | <p>ADDA National Design/Drafting Contest CANON CITY HIGH SCHOOL 1313 COLLEGE AVE. CANON CITY, COLORADO 81212</p> <p>REGULATOR STATION ANSI 150</p> | <p>SHEET 1 OF 1 SHEETS</p> <p>DATE: 12/12/08</p> |
| <p>DRAWN: ZINA KALIPOLITES</p> | <p>INSTRUCTOR: MIKE GEESAMAN</p> | <p>DATE: 12/12/08</p> |
| <p>INSTRUCTOR E-MAIL: geesammi@canoncityschools.org</p> | | <p>DATE: 12/12/08</p> |
| <p>BC-PIPE</p> | | |