

1	1	TOOL POST BODY	CAST IRON	2
2	1	WEDGE	SAE 1045 HEAT TREAT	3
3	1	BOLT	SAE 1040 HEAT TREAT	3
4	2	TOOL POST SCREW	SAE 1040 HEAT TREAT	2
5	1	ADJUSTING SCREW	SAE 1040 HEAT TREAT	2
6	1	AMER STD FINISHED HEX NUT	SAE 1040	3
7	2	SET SCREW	SAE 1040 HEAT TREAT	2
8	1	WASHER	SAE 1040	3
9	1	WASHER	SAE 1040 HEAT TREAT	3
10	1	ADJUSTING NUT	SAE 1040 HEAT TREAT	3
DET	REQ'D	DESCRIPTION	MAT'L	SHEET

BILL OF MATERIALS

GENERAL TOLERANCE

FRACTIONS  
 $\pm \frac{1}{64}$

DECIMALS  
 $\pm .003$

ANGLES  
 $\pm 0^\circ - 15'$

ADDA National Design/Drafting Contest  
**CANON CITY HIGH SCHOOL**  
 1313 COLLEGE AVE.

TOOL POST

DRAWN:  
 ANDREW STEELE

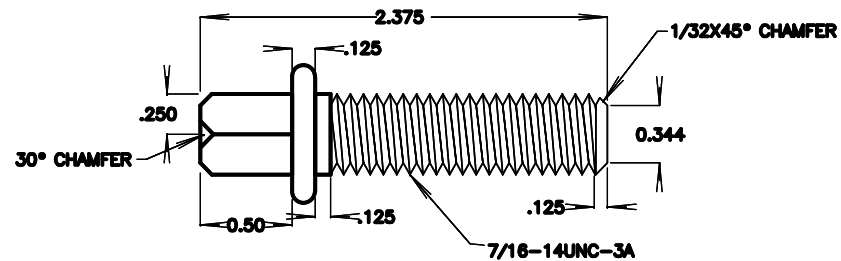
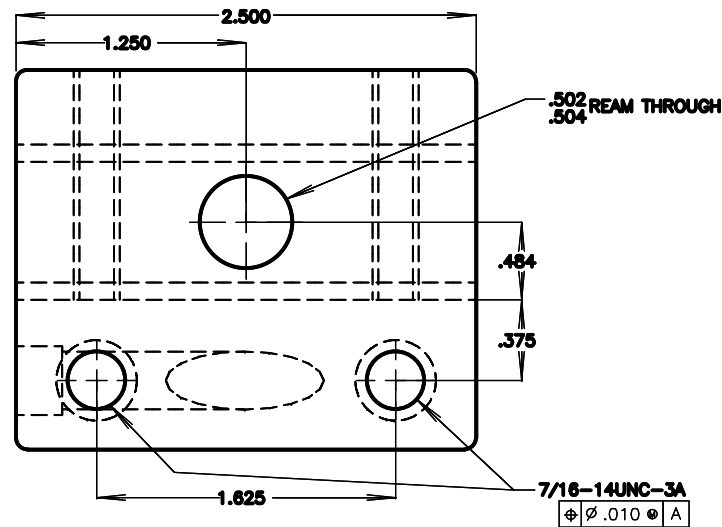
DATE:  
 12-10-08

INSTRUCTOR:  
 MIKE GEESAMAN

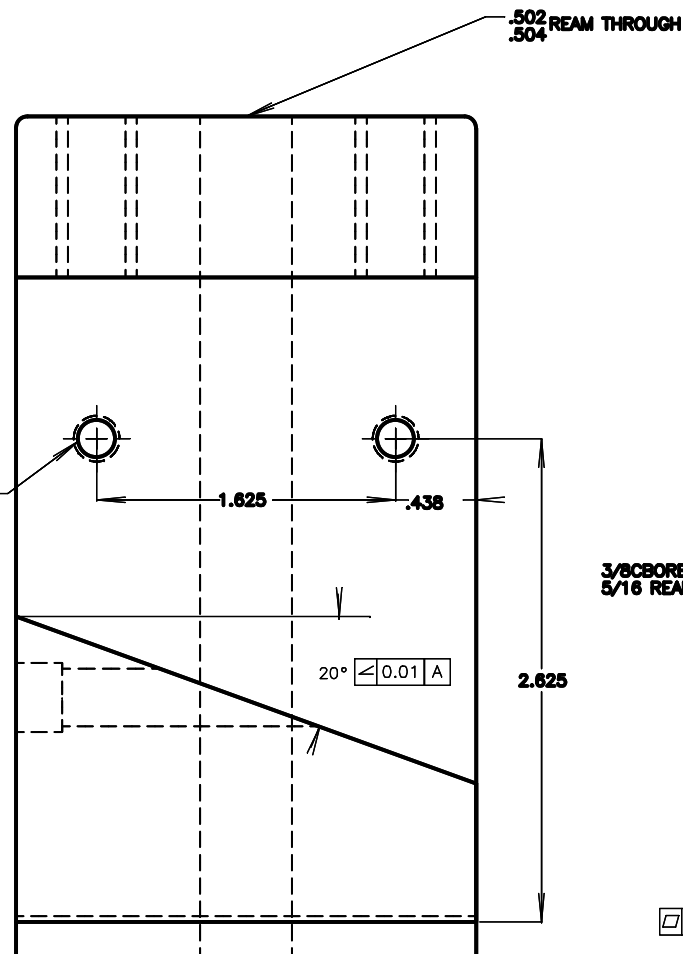
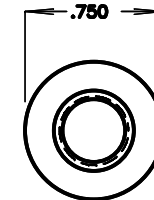
INSTRUCTOR E-MAIL:  
 geesaman@canoncityschools.org

SHEET 1 OF 4 SHEETS

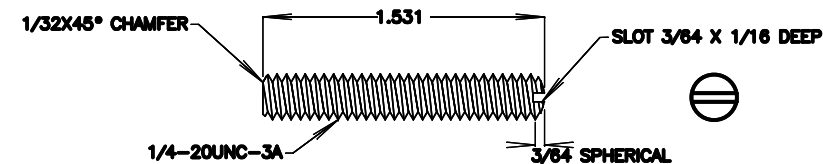
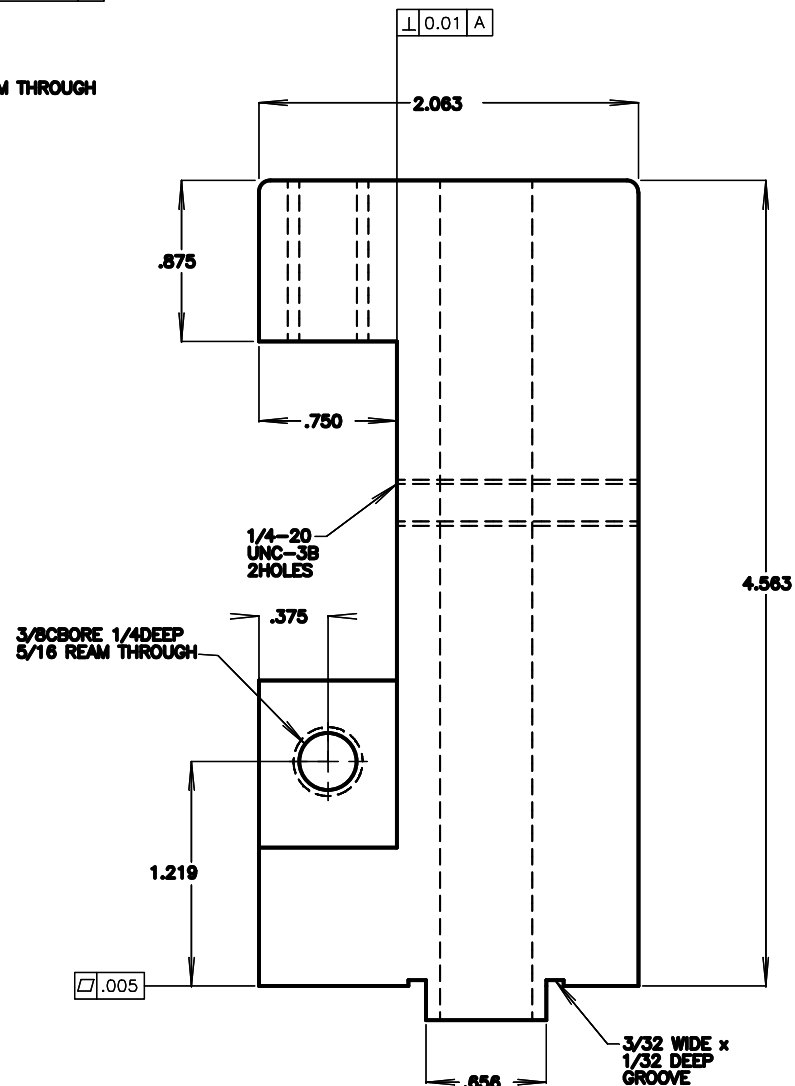
CATAGORY/DMSION  
**BC-MECH**



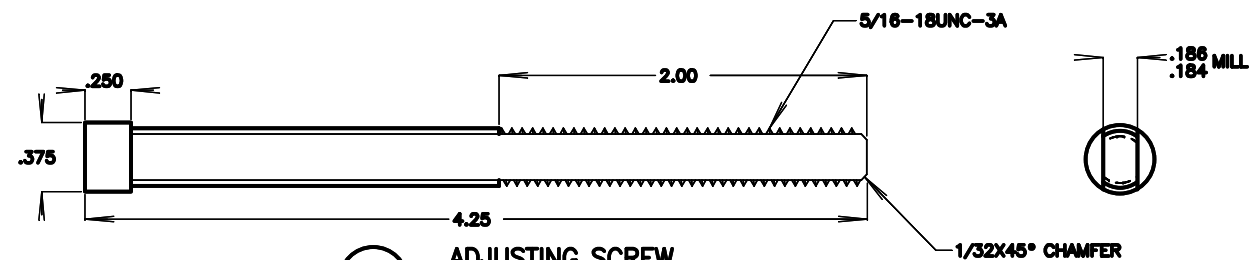
**4** TOOL POST SCREW  
 MAT'L SAE 1040 HEAT TREAT  
 2 REQ'D



**1** TOOL POST BODY  
 MAT'L CAST IRON-1 REQ'D

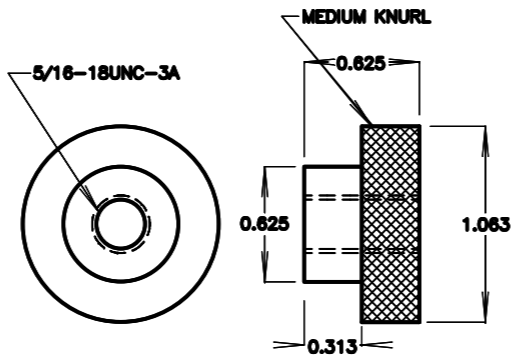
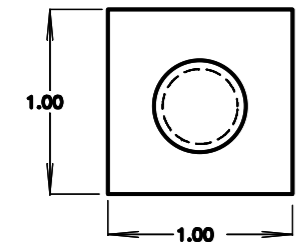


**7** SET SCREW  
 MAT'L SAE 1040 HEAT TREAT  
 2 REQ'D

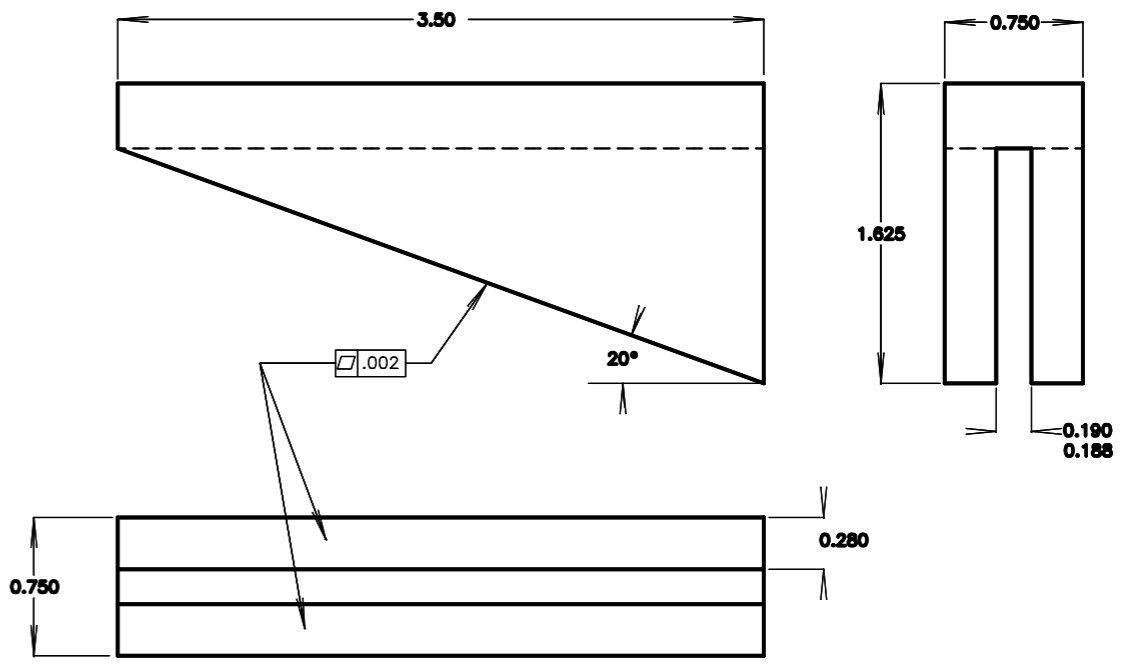


**5** ADJUSTING SCREW  
 MAT'L SAE 1040 HEAT TREAT  
 1 REQ'D

<b>GENERAL TOLERANCE</b>  FRACTIONS $\pm \frac{1}{64}$  DECIMALS $\pm .003$  ANGLES $\pm 0^\circ - 15'$	ADDA National Design/Drafting Contest <b>CANON CITY HIGH SCHOOL</b> 1313 COLLEGE AVE.	
	<b>TOOL POST</b>	
DRAWN: <b>ANDREW STEELE</b>	INSTRUCTOR: <b>MIKE GEESAMAN</b>	SHEET 2 OF 4 SHEETS
DATE: <b>12-10-08</b>	INSTRUCTOR E-MAIL: geesaman@canoncityschools.org	CATAGORY/DVMSION <b>BC-MECH</b>



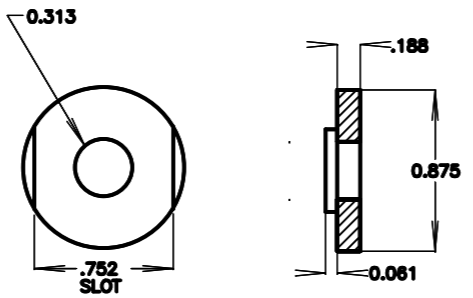
**10** ADJUSTING NUT  
 MAT'L SAE 1040 HEAT TREAT  
 1 REQ'D



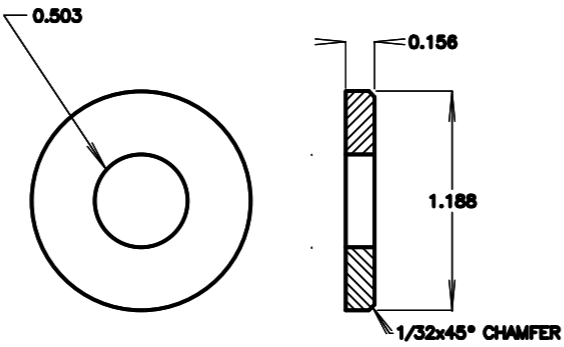
**2** WEDGE  
 MAT'L SAE 1045 HEAT TREAT  
 1 REQ'D



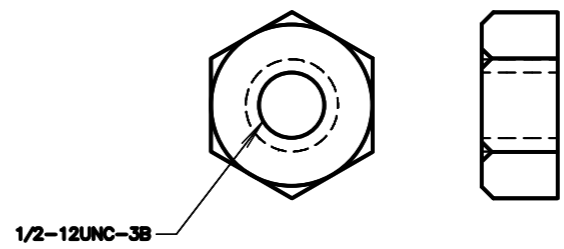
**4** BOLT  
 MAT'L SAE 1040 HEAT TREAT  
 1 REQ'D



**9** WASHER  
 MAT'L SAE 1040 HEAT TREAT  
 1 REQ'D



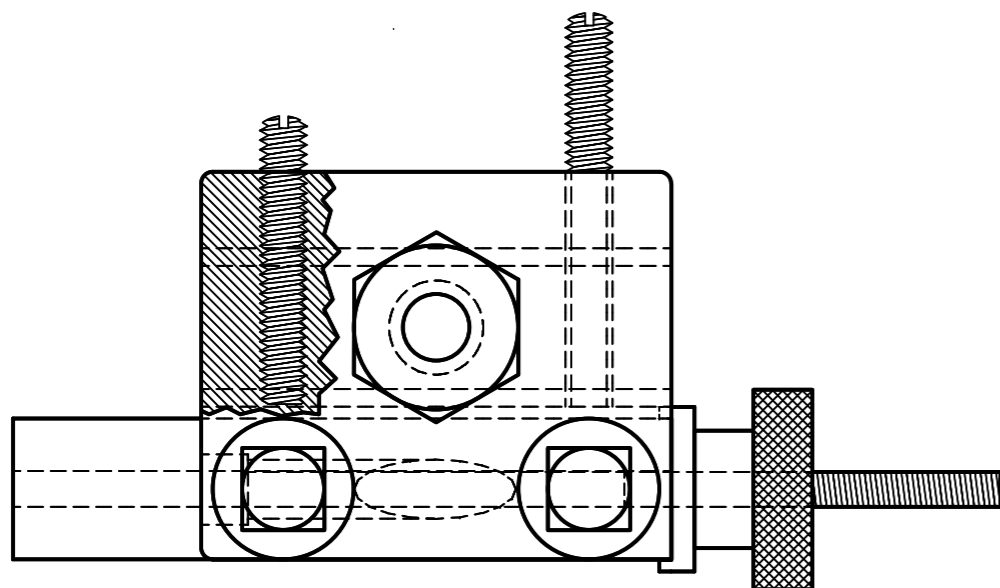
**8** WASHER  
 MAT'L SAE 1040 HEAT TREAT  
 1 REQ'D



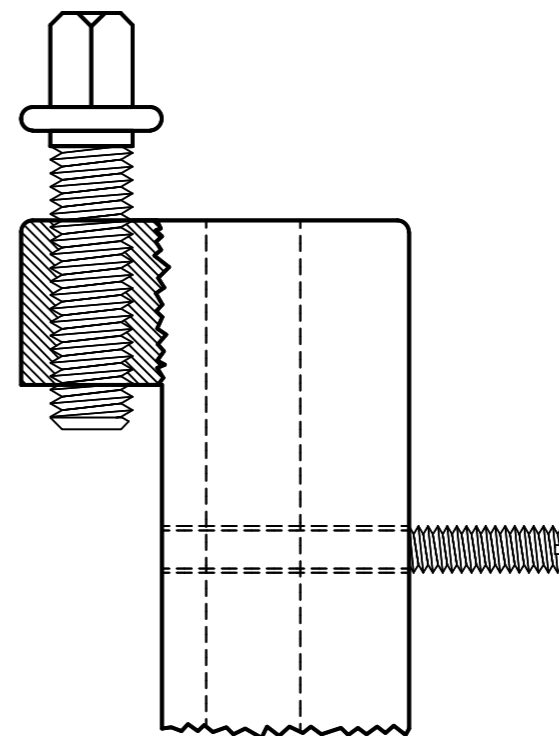
**6** AMER STUD FINISHED HEX NUT  
 MAT'L SAE 1040  
 1 REQ'D

<b>GENERAL TOLERANCE</b>  FRACTIONS $\pm \frac{1}{64}$  DECIMALS $\pm .003$  ANGLES $\pm 0^\circ - 15'$	ADDA National Design/Drafting Contest <b>CANON CITY HIGH SCHOOL</b> 1313 COLLEGE AVE.	
	<b>TOOL POST</b>	
DRAWN: <b>ANDREW STEELE</b>	INSTRUCTOR: <b>MIKE GEESAMAN</b>	SHEET 3 OF 4 SHEETS
DATE: <b>12-10-08</b>	INSTRUCTOR E-MAIL: <b>geesaman@canoncityschools.org</b>	CATAGORY/DIVISION <b>BC-MECH</b>

# EXTRA ASSEMBLY VIEWS



TOP VIEW OF ASSEMBLY WITH ALL SCREWS BOLTS AND WASHERS SHOWING SET SVREW USE FROM BACK



SIDE VIEW OF ASSEMBLY WITH TOOL POST SCREW AND SET SCREW

GENERAL TOLERANCE		ADDA National Design/Drafting Contest	
FRACTIONS $\pm \frac{1}{64}$		CANON CITY HIGH SCHOOL	
DECIMALS $\pm .003$		1313 COLLEGE AVE.	
ANGLES $\pm 0^\circ - 15'$		TOOL POST	
DRAWN: ANDREW STEELE	INSTRUCTOR: MIKE GEESAMAN	SHEET 4 OF 4 SHEETS	
DATE: 12-10-08	INSTRUCTOR E-MAIL: geesaman@canoncityschools.org	CATAGORY/DIVISION BC-MECH	