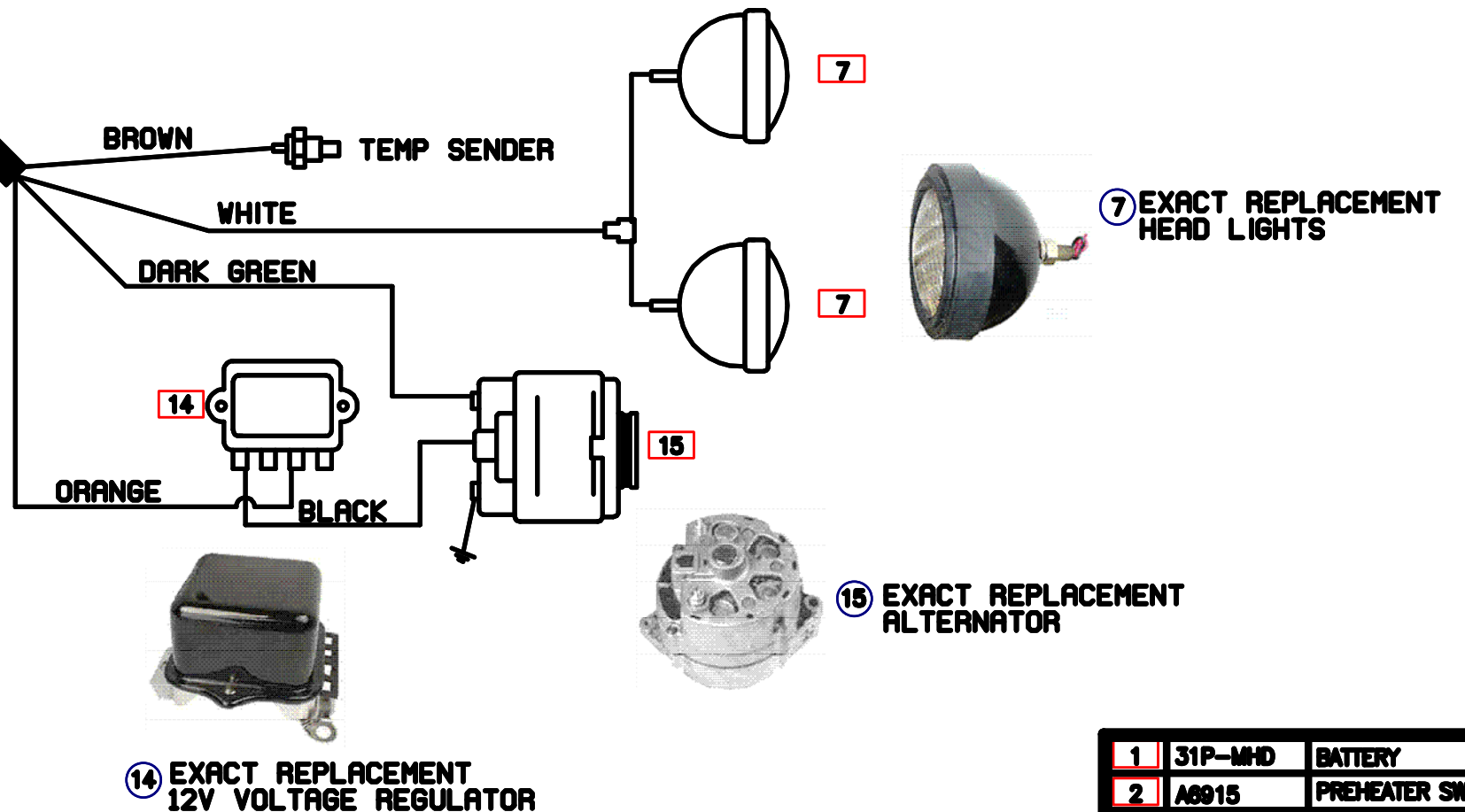
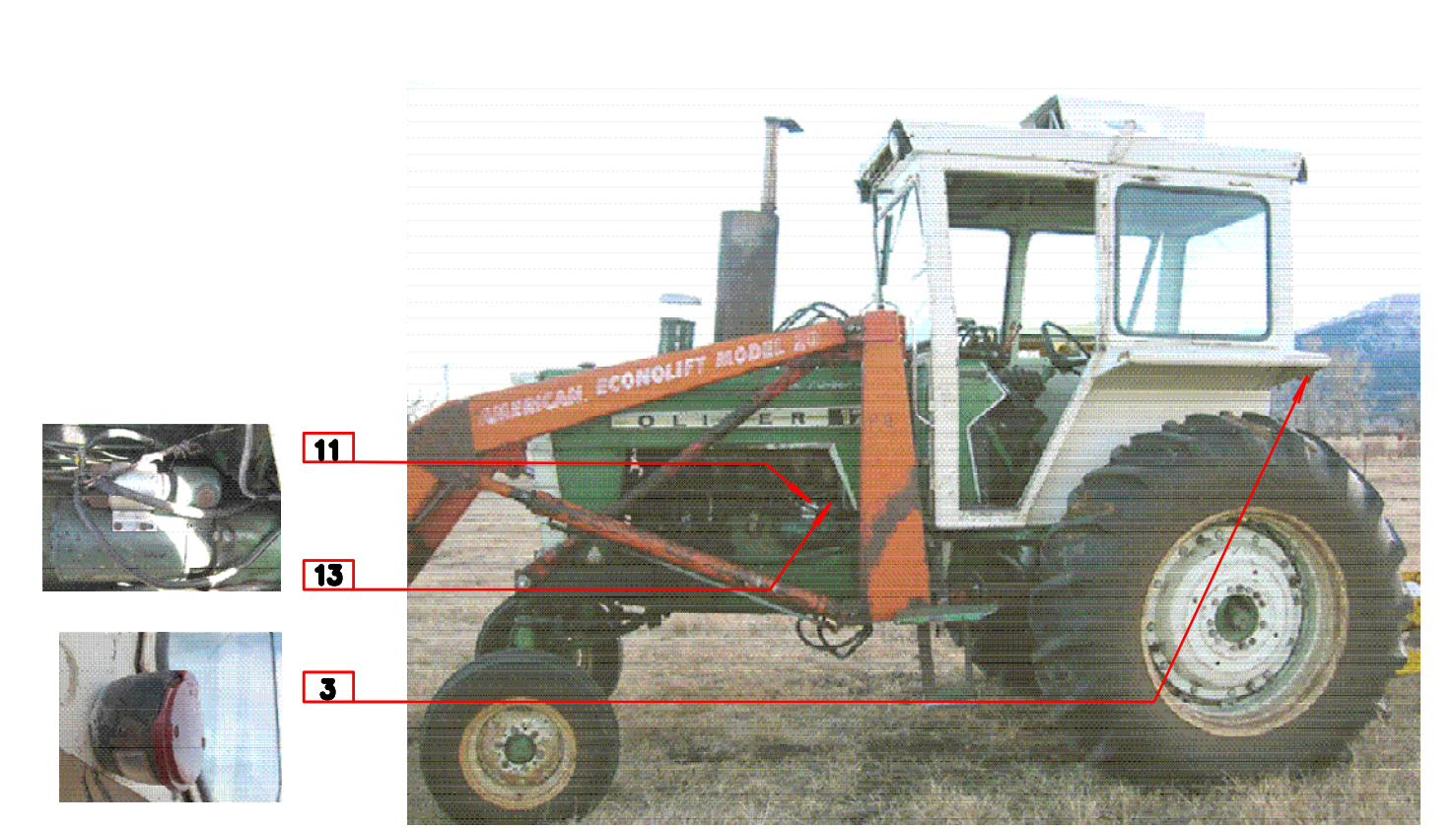
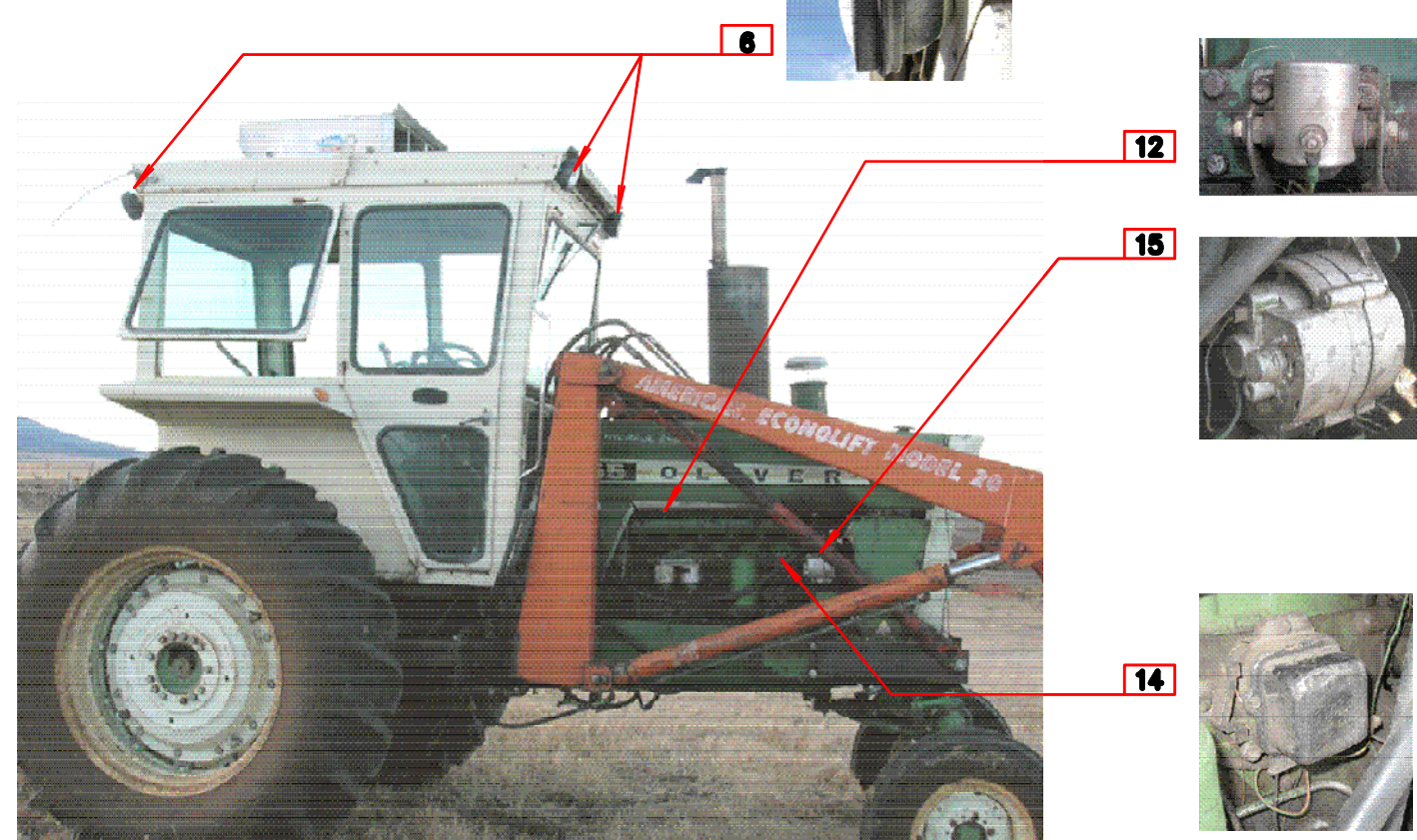
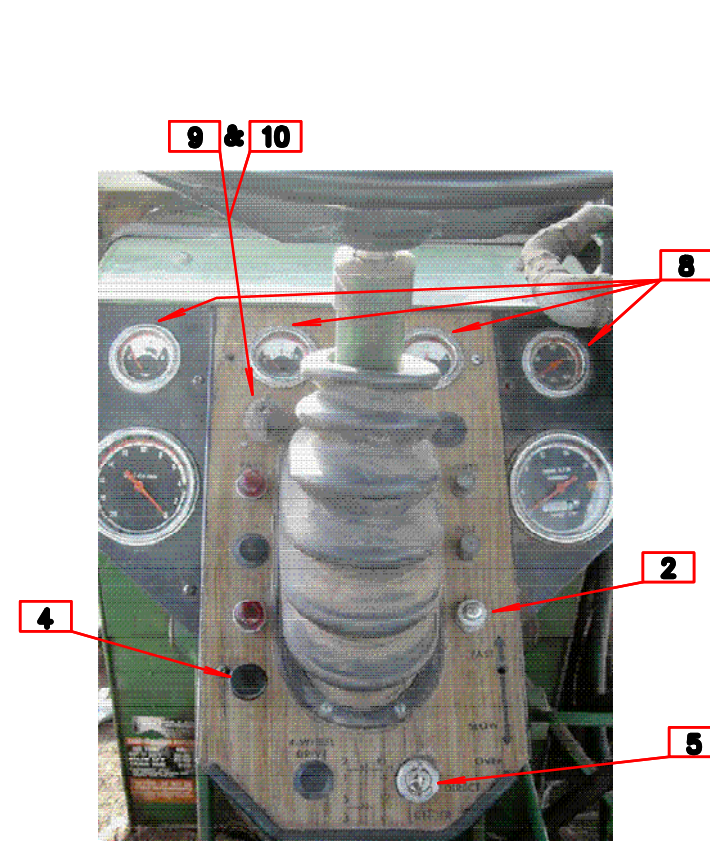
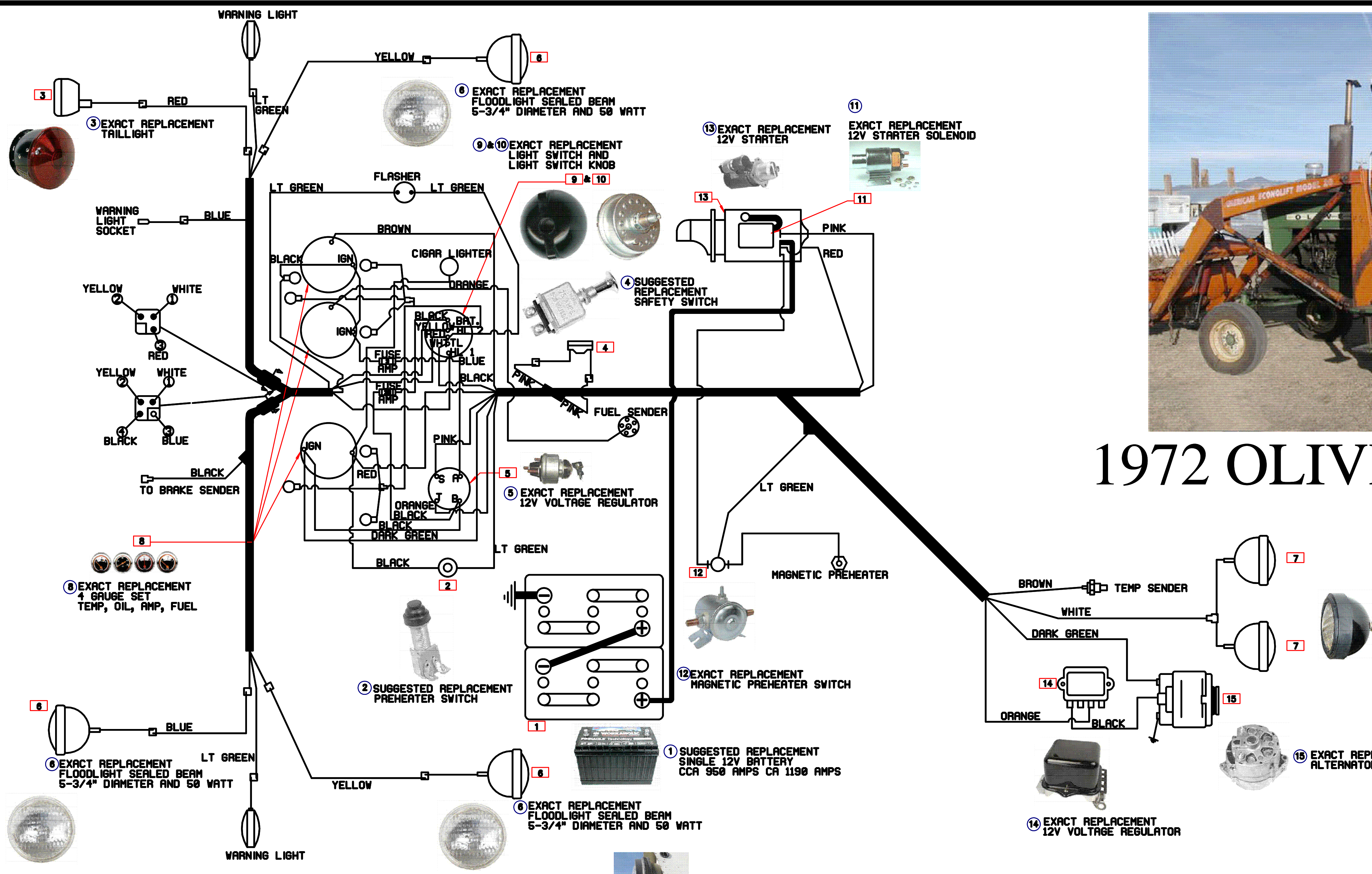




# 1972 OLIVER 1755 DIESEL



PART	ORDER #	DESCRIPTION	COMPANY/CONTACT	PICTURE
1	31P-MHD	BATTERY	CHECKER AUTO PARTS <a href="http://www.calauto.com">http://www.calauto.com</a>	(1)
2	A8915	PREHEATER SWITCH	CHECKER AUTO PARTS <a href="http://www.calauto.com">http://www.calauto.com</a>	(2)
3	B65LW	TAIL LIGHT	CHECKER AUTO PARTS <a href="http://www.calauto.com">http://www.calauto.com</a>	(3)
4	0605542200	SAFETY SWITCH	CHECKER AUTO PARTS <a href="http://www.calauto.com">http://www.calauto.com</a>	(4)
5	72163174-R	STARTER SWITCH	AG PARTS FIRST, LLC <a href="http://tstores.agpartsfirst.com">http://tstores.agpartsfirst.com</a>	(5)
6	H7809-R	FLOOD LIGHTS	AG PARTS FIRST, LLC <a href="http://tstores.agpartsfirst.com">http://tstores.agpartsfirst.com</a>	(6)
7	164089AS-R	HEAD LIGHTS	AG PARTS FIRST, LLC <a href="http://tstores.agpartsfirst.com">http://tstores.agpartsfirst.com</a>	(7)
8	00S4-R	GAUGE SET	AG PARTS FIRST, LLC <a href="http://tstores.agpartsfirst.com">http://tstores.agpartsfirst.com</a>	(8)
9	105373A-R	LIGHT SWITCH KNOB	AG PARTS FIRST, LLC <a href="http://tstores.agpartsfirst.com">http://tstores.agpartsfirst.com</a>	(9)
10	107940	LIGHT SWITCH	ALL STATE AG PARTS <a href="http://www.TractorPartsASAP.com">www.TractorPartsASAP.com</a>	(10)
11	105672	STARTER SOLENOID	ALL STATE AG PARTS <a href="http://www.TractorPartsASAP.com">www.TractorPartsASAP.com</a>	(11)
12	105671	MAGNETIC PREHEATER SWITCH	ALL STATE AG PARTS <a href="http://www.TractorPartsASAP.com">www.TractorPartsASAP.com</a>	(12)
13	203144	STARTER	ALL STATE AG PARTS <a href="http://www.TractorPartsASAP.com">www.TractorPartsASAP.com</a>	(13)
14	105289	VOLTAGE REGULATOR	ALL STATE AG PARTS <a href="http://www.TractorPartsASAP.com">www.TractorPartsASAP.com</a>	(14)
15	203168	ALTERNATOR	ALL STATE AG PARTS <a href="http://www.TractorPartsASAP.com">www.TractorPartsASAP.com</a>	(15)

BILL OF MATERIALS	
IF DIMENSIONS ARE PRESENT	ADDA National Design/Drafting Contest Cañon City High School 1313 Citrus Ave., Cañon City, CO
FRACTIONS ±.04	ENHANCED SCHEMATIC FOR 1972 OLIVER 1755 DIESEL
DECIMALS ±.003	
ANGLES ±0°- 15°	OWNER: ELIZABETH CANDA DATE: 12/10/2008
	DESIGNER: MIKE GEESAMAN CHECKED BY: geesamm@canoncityschools.org
	SHEET 1 OF 1 SHEETS COURTESY: BC-ELEC