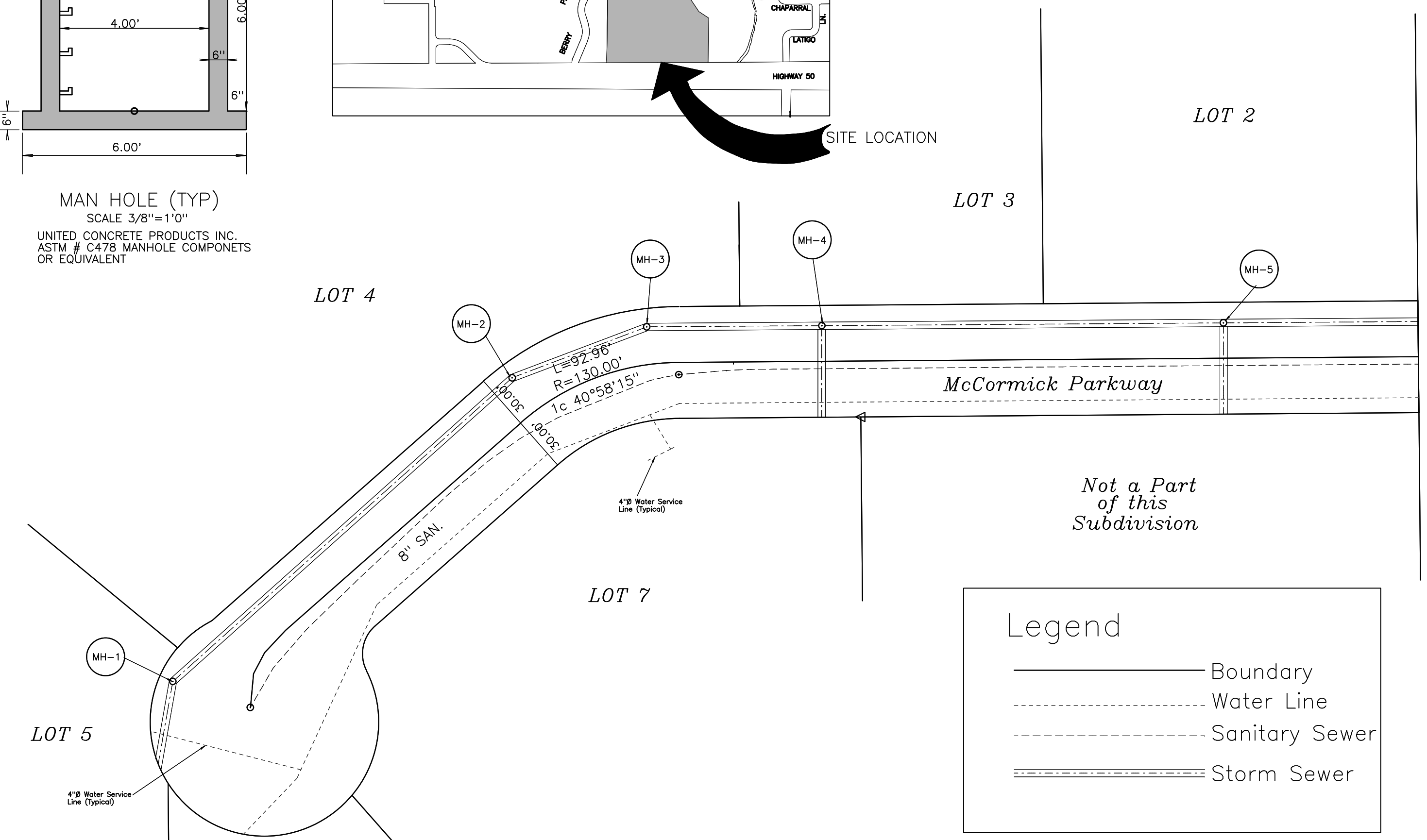
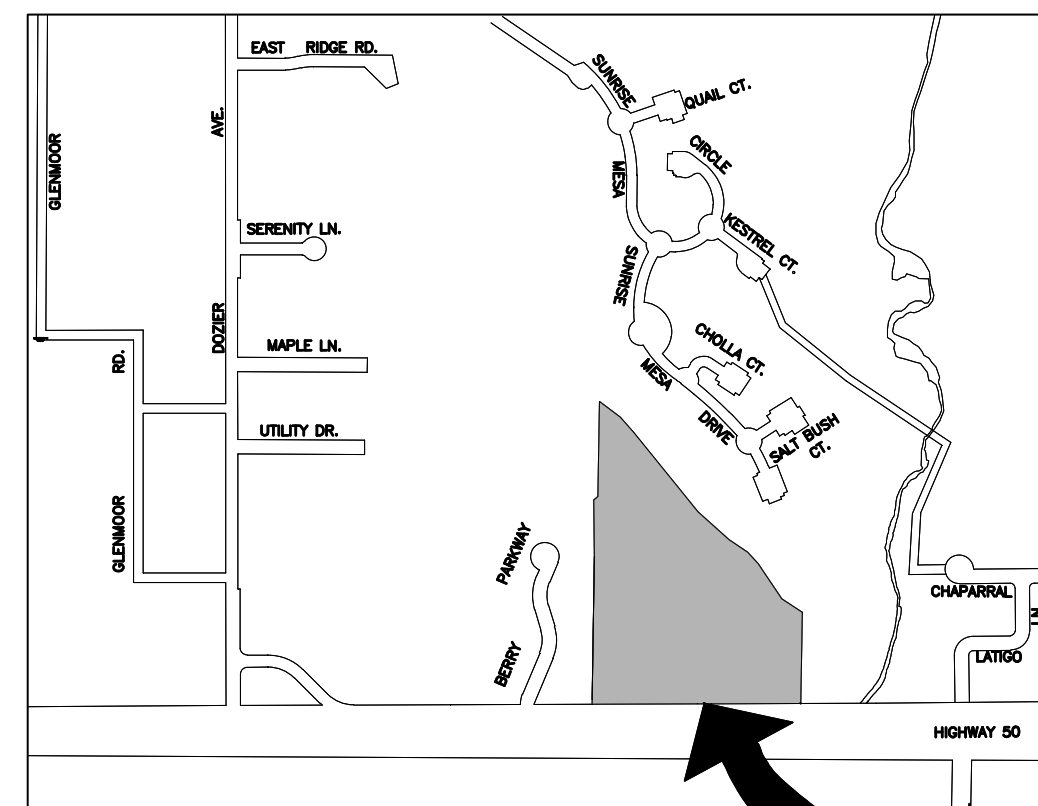
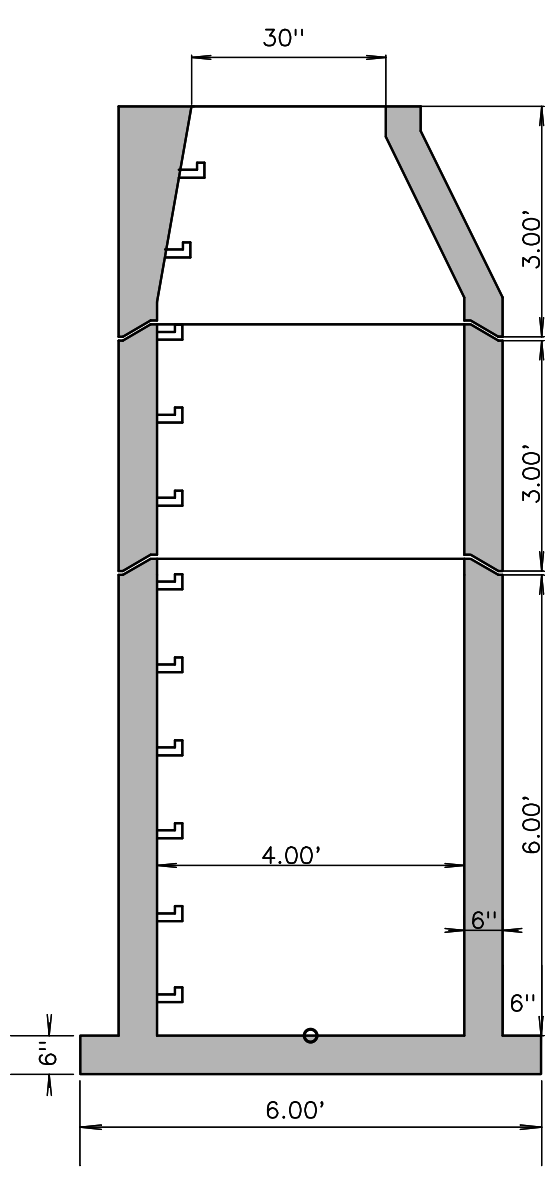


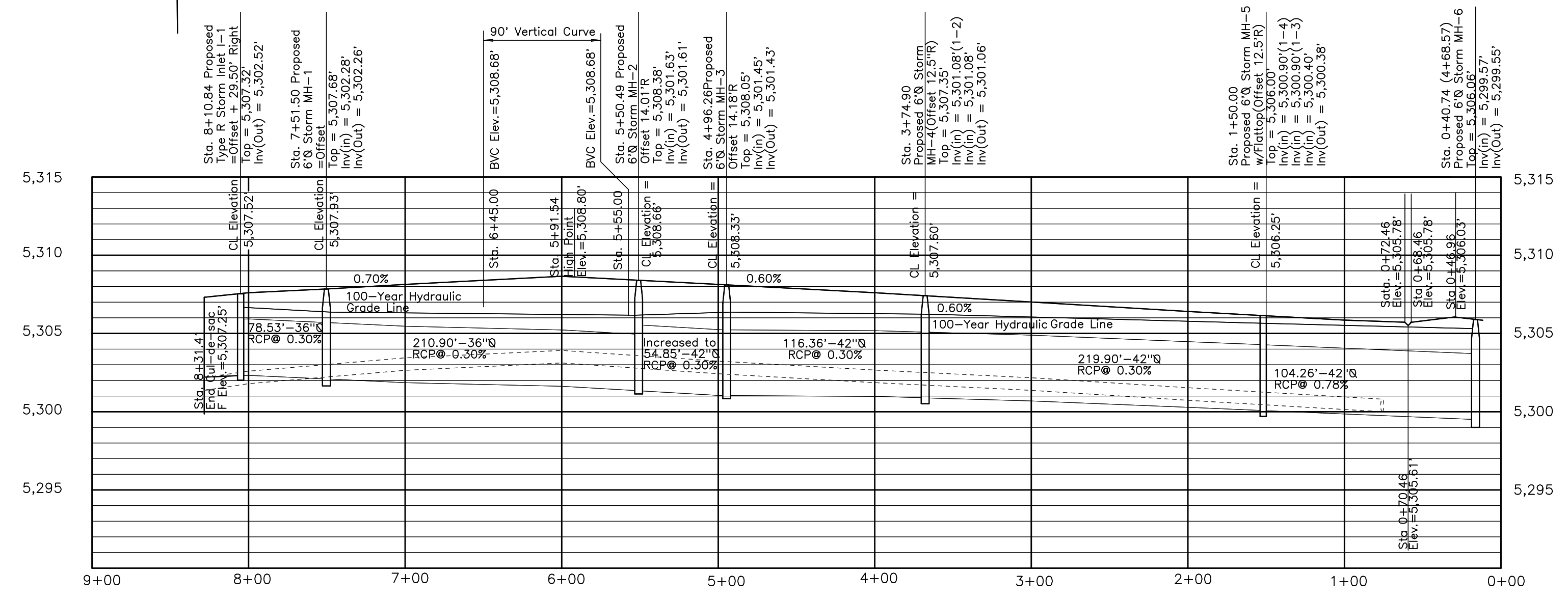
# Amended Plat of George McCormick Gateway Park

A Vacation and Replat of Lot 2,  
Hecker/McCormick Boundary Line Adjustment  
Canon City, Fremont County, Colorado



Legend

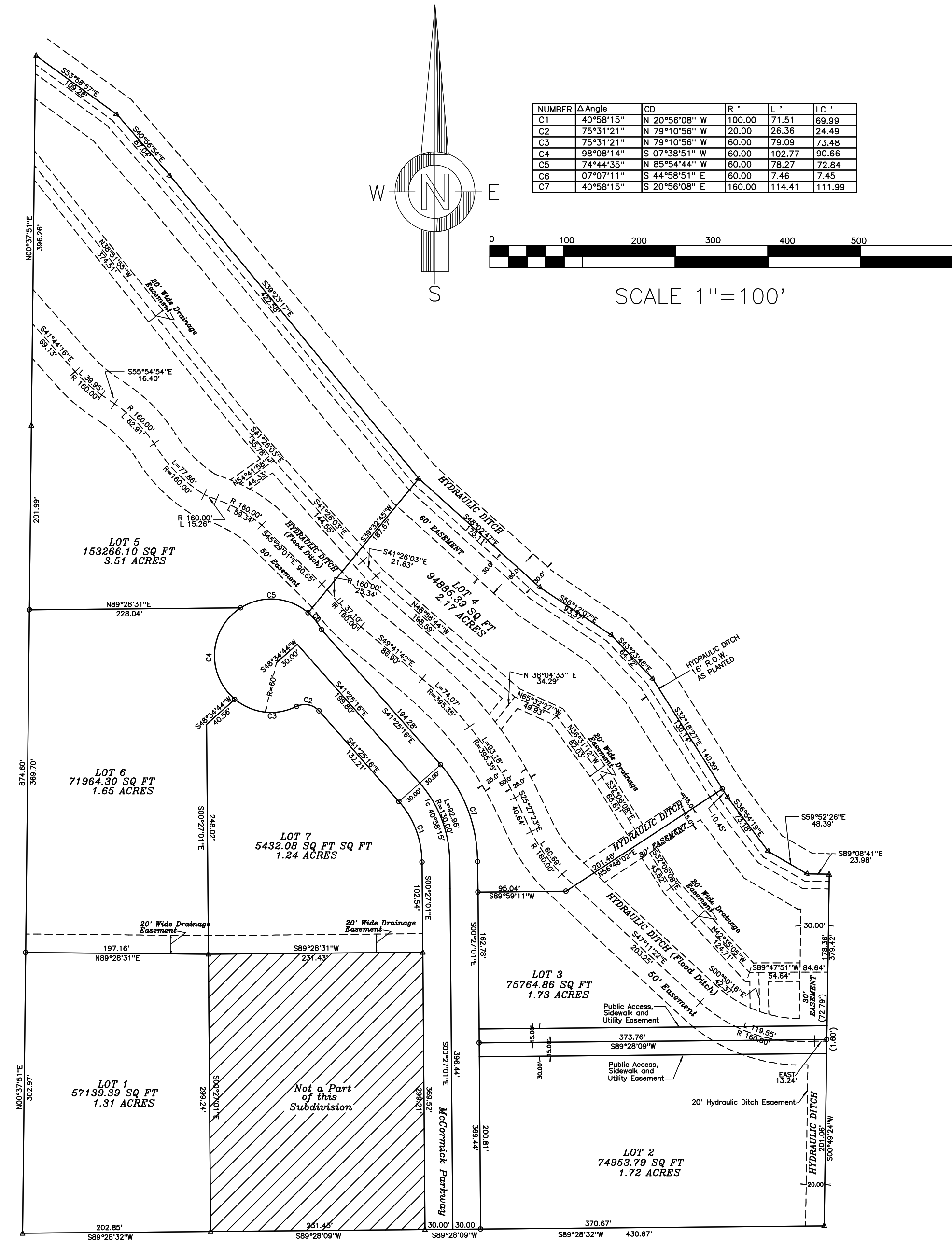
- Boundary
- Water Line
- Sanitary Sewer
- Storm Sewer



Bearings are based upon the West line of Lot 2, Hecker/McCormick Boundary Line Adjustment, According to the recorded plat as N°37°51'11" E between the SW corner and the NW corner of said Lot 2. Canon City, Fremont County, Colorado.

TO WIT:

Lots 1 thru 7, George McCormick Gateway Park, according to the plat thereof on file in the office of the Fremont County Clerk and Recorder. Said parcel contains 14.51 acres more or less.



This drawing was prepared as an entry for the ADDA's (American Design Drafting Association's) 41st Annual Drafting Contest and remains the property of the ADDA. Reproduction of this drawing by any individual or organization is strictly forbidden without written permission of the ADDA, or the ADDA's (American Design Drafting Association's) 41st Annual Drafting Contest and remains the property of the ADDA.

ADDA National Design/Drafting Contest  
**Cañon City High School**  
1313 College Ave.

Amended Plat of George McCormick Gateway Park

INSTRUCTOR  
Mr. Geesaman  
geesam@cañoncityschools.org

DRAWN  
Tara Dillon

Category/Division  
**BC-CIVI**

SHEET NUMBER  
**3**  
OF 9 SHEETS