

CADVANCE News

June 2007 Canon City High School

CAD Drawing Contest

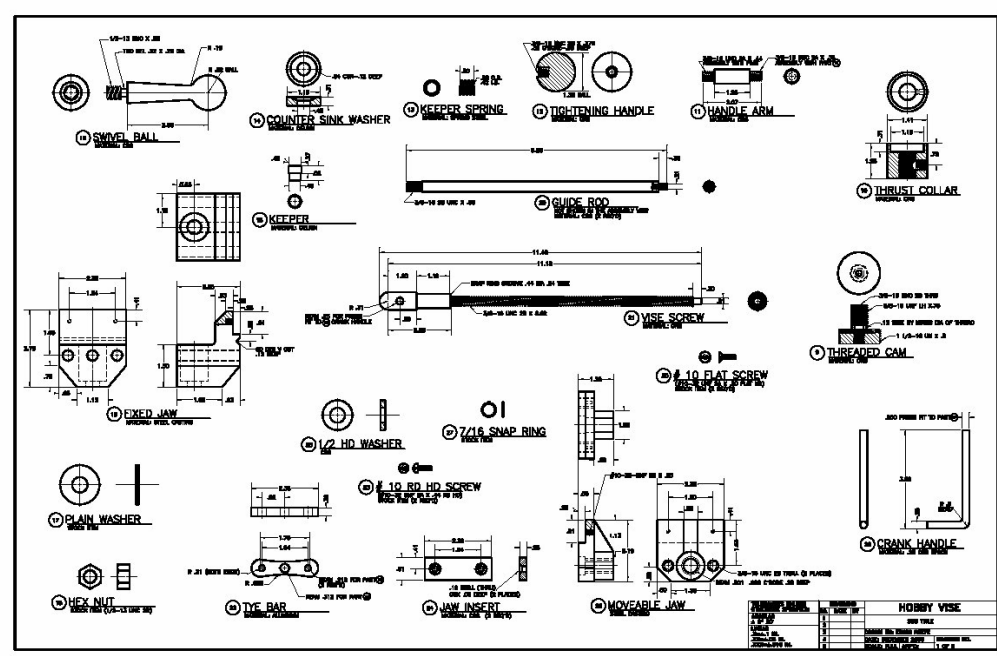
Contest sponsored by ADDA - American Design Drafting Association

Canon City High School, CO, won again!

Mr. Mike Geesaman, a Canon City High School teacher who has been teaching CAD classes using CADVANCE, kindly sent us his students drawings that won the drafting contest.

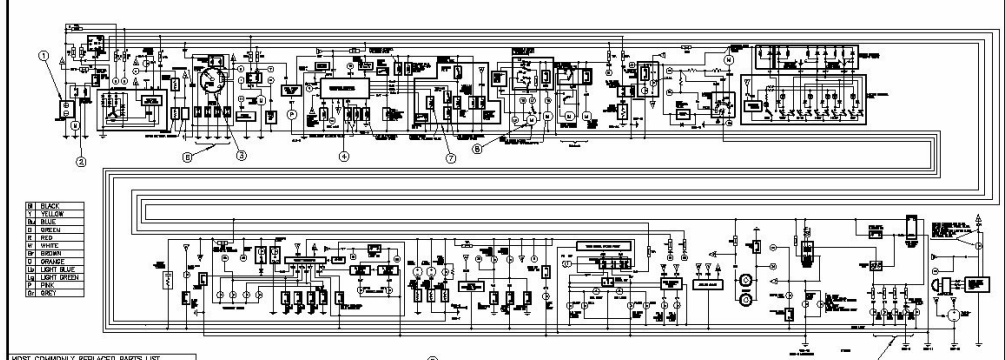
All of you may be surprised to see the drawings that were made by high school students.

You can see awards listing: <http://cchsweb.org/ADDA/2007winners.pdf>



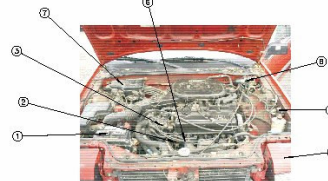
For larger picture: http://www.cadvance.com/Canon_high_school/BC-3-NEEFEE-CCHS.pdf

1989 HONDA ACCORD WIRING SCHEMATIC AND REPLACEMENT PARTS LIST



MOST COMMONLY REPLACED PARTS LIST

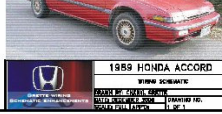
PART	OEM PART NUMBER
BATTERY	181 40019 52
ALTERNATOR	311100PH1024HM
IGNITION COIL	30000PH10106
STARTER UNIT	300120PH0005
DOORING FAN MOTOR	16030PH7013
WINDSHIELD WIPER & WASHER SWITCH	7800000004
WINDSHIELD WIPER FRONT	7800000004
WINDSHIELD WIPER REAR	7800000001
HEATER BLOWER SWITCH	7801000012
HEATER BLOWER	7800000005
HEATER CONTROL PANEL	7800000000
BRAKE LIGHT SENSOR	3800000003
BRAKE LIGHT SWITCH	3800000001
OIL PRESSURE SWITCH	4800000001
BACK UP LIGHT SWITCH	3800000003
FRONT CLIP LIGHT	4800000001



BRAKE LIGHT SENSOR	35362820A03
BRAKE LIGHT SWITCH	35362820A01
OIL PRESSURE SWITCH	45662820A01
BACK UP LIGHT SWITCH	35662820A03
BRAKE FLUID LEVEL	45662820A01
PARKING BRAKE SWITCH	47342820A01
HEADLIGHT SWITCH	3325067A11
HORN LIGHT SWITCH	35A32820A03
IGNITION SWITCH	721292820A01
IGNITION SWITCH	721292820A01

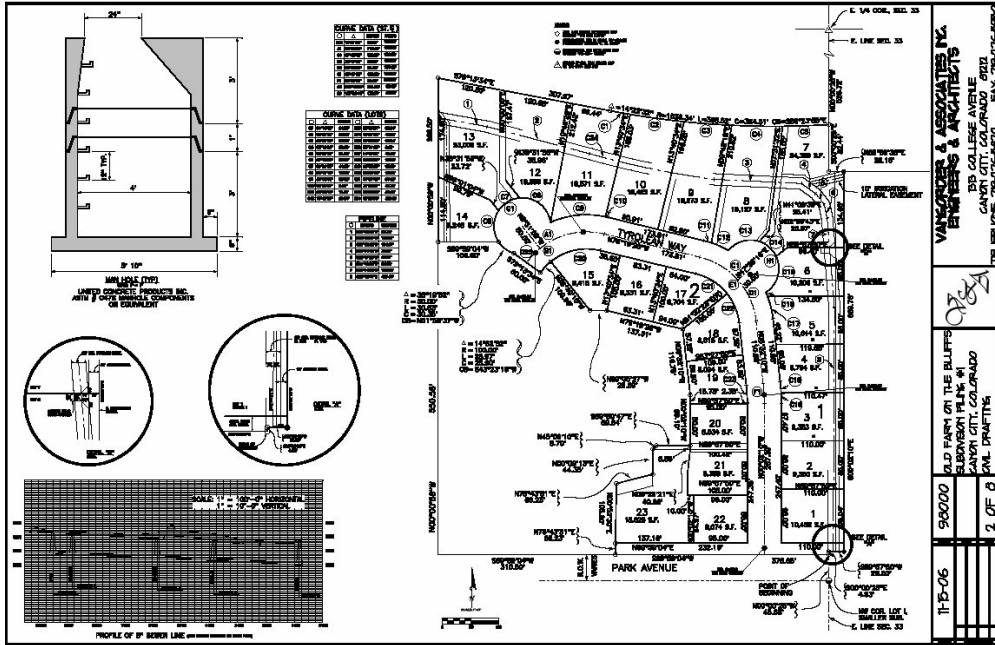


OPEN HOOD VIEW OF MANY ELECTRICAL PARTS

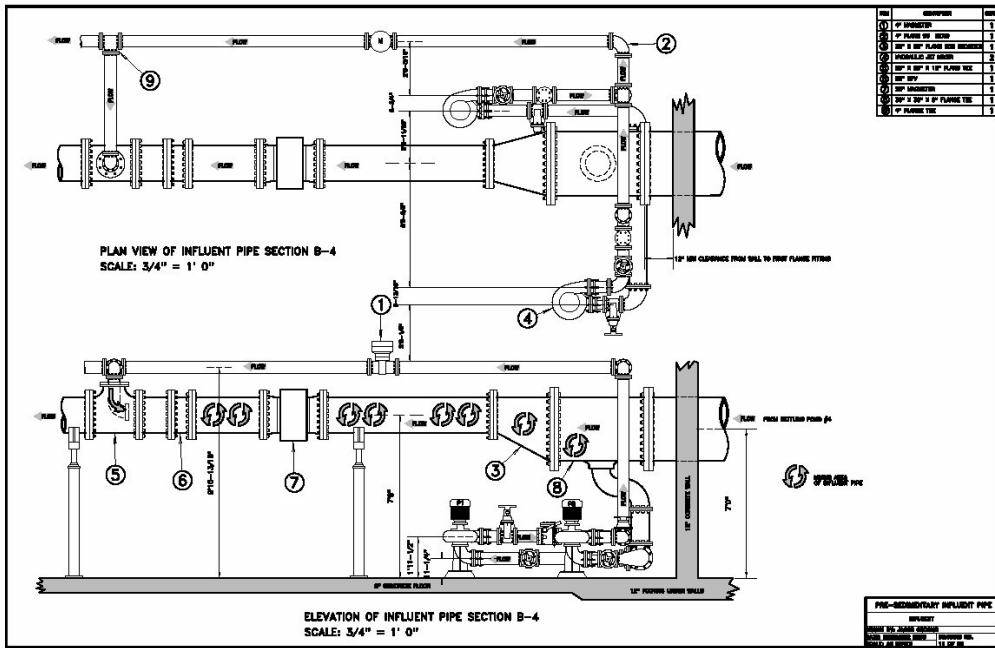


1989 HONDA ACCORD
VIN: 3D9EM8E69G000000000
YEAR: 1989
MAKE: HONDA
MODEL: ACCORD

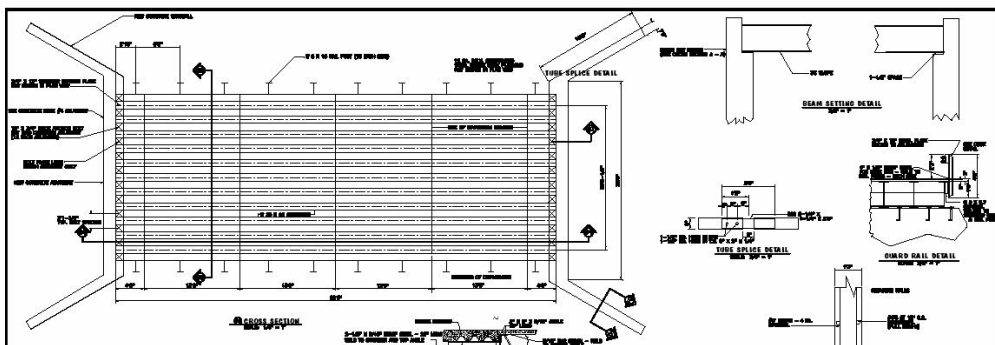
For larger picture: http://www.cadvance.com/Canon_high_school/BC-5-GRETTE-CCHS.pdf

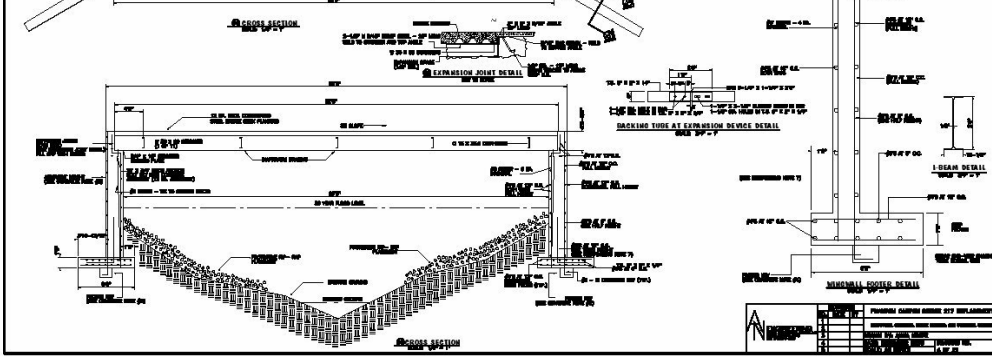


For larger picture: http://www.cadvance.com/Canon_high_school/BC-6-VANGORDER-CCHS.pdf

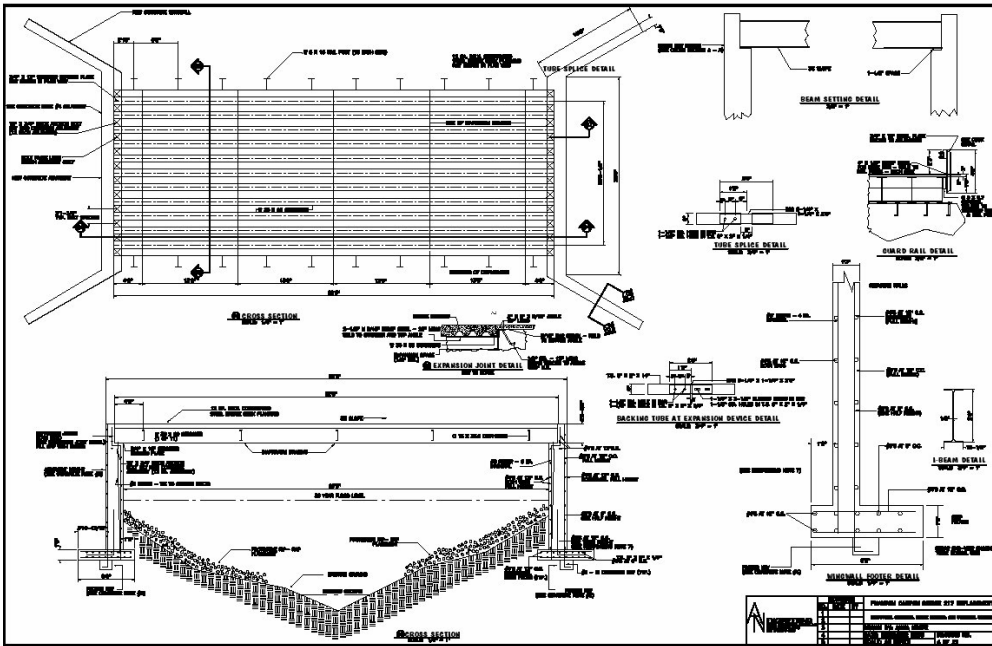


For larger picture: http://www.cadvance.com/Canon_high_school/BC-7-GROOMS-CCHS.pdf

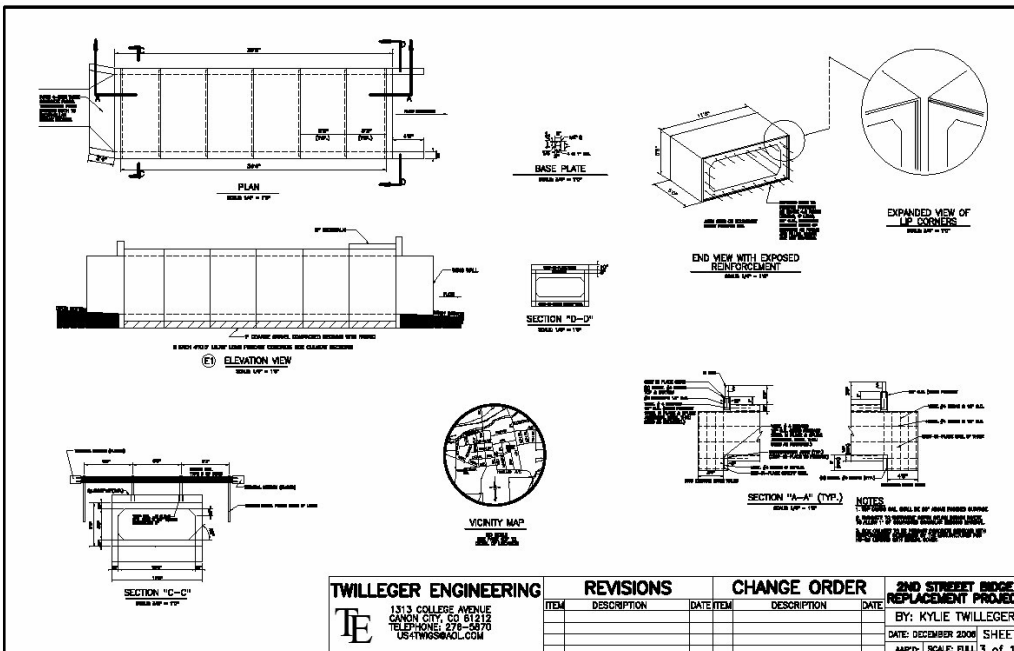




For larger picture: http://www.cadvance.com/Canon_high_school/BC-9-NEEFA-CCHS.pdf



For larger picture: http://www.cadvance.com/Canon_high_school/BC-9-REGER-CCHS.pdf



For larger picture: http://www.cadvance.com/Canon_high_school/BC-9-TWILLEGGER-CCHS2.pdf

Missed any Newsletters? You can view them all at [Archived Newsletters](#) on our web site.

Have a Question? Send it to us at support@fitinc.com